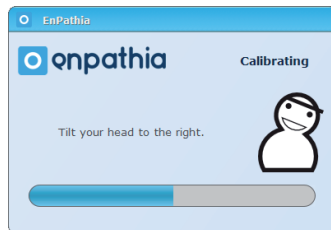


Step 6



When you are ready to start, make smooth movements to fill the bar that appears on screen.

Step 7



The system will check the calibration of the sensor. Follow the on-screen instructions.

Step 8



Turn EnPathia up and down to move the cursor vertically, and tilt it left and right to move it horizontally. For example, if you are using EnPathia with your head look to the upper and lower edges of the screen and tilt your head sideways.

Step 9



You can configure EnPathia to adapt it to the way you work, and even use it with commercial switches. See the user manual



Quick start guide

Tel: +34 902 00 55 61
www.enso.es

Enso Tecnología de Adaptación S.L.



Browsing the web, writing, navigating files and folders... with EnPathia using a computer is just as simple as with conventional mice and keyboards.

EnPathia is Enso's system for accessible computer control.



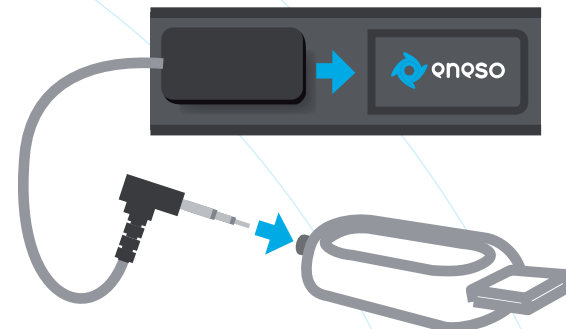
Quick start guide

Step 1



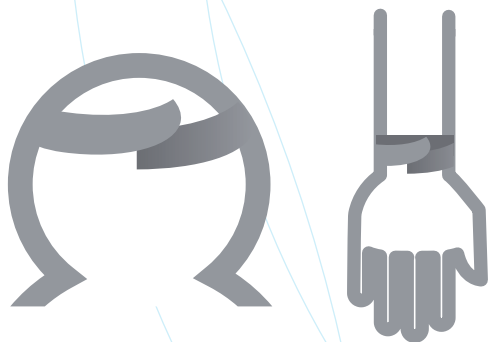
Install the application included in the CD following the on-screen instructions.

Step 2



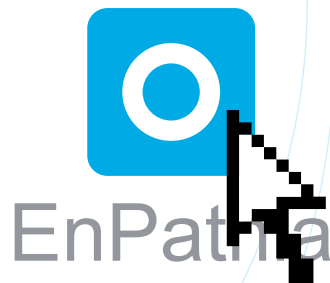
Insert the sensor into the band pocket and connect it to the USB device.

Step 3



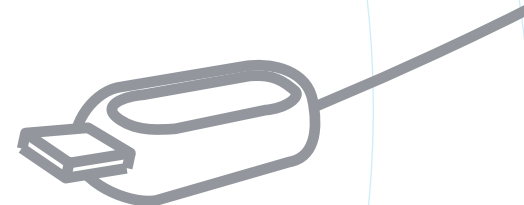
Attach the band to the part of the body from which you want to capture the movement. You can use the band at any position.

Step 4



Launch the application.

Step 5



Connect the USB device to the computer.